

QUESTIONS AND ANSWERS

Can we bring in furniture?

Yes – we strongly urge you to bring in items such as pictures, bedding, lamps, TV etc- any furniture that will fit safely in your room.

Are pets allowed to visit?

You may bring a pet in for a visit provided the animal is healthy and receives regular immunization.

What type of clothing should we bring?

Clothing that is comfortable and machine washable only e.g. track suits, easy-access dresses and shirts, pajamas which can be easily removed/changed.

Are special diets available?

Yes – Resident diets will be assessed on admission. Food intake is monitored daily and if modifications are required the doctor will order the change.

Does the menu offer choice?

Yes – for each meal there will be a main entrée and an alternate choice available. Menus will be on display in the dining room and special consideration will be given to cultural dietary needs.

Are meals cooked in the home?

Yes – all meals are home-cooked.

Can family bring in gifts of food?

Yes – however, you must ensure that foods brought in do not interfere with the prescribed diets for residents. Perishable

food gifts are discouraged unless they are to be consumed right away.

Can families/guests have meals with residents?

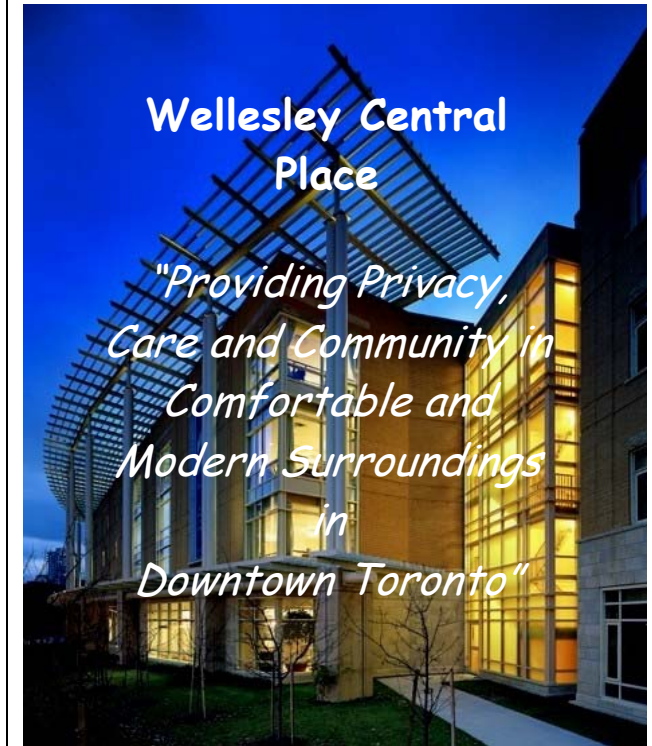
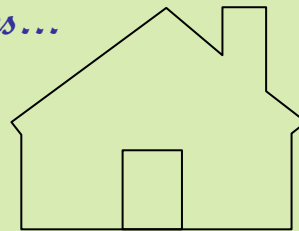
Yes – we have a “share-a-meal” program for lunch and dinner. Two hours advance notice is appreciated so that we can prepare for guests. There is a nominal fee for this service and meal tickets can be purchased at reception which must be taken to the dining room

Note: for larger resident parties/ gatherings 7 working days notice is required.

Does the home provide physical aides such as walkers, wheelchairs etc?

Wellesley Central Place will supply physical aids on admission if necessary, on a temporary basis only. The resident/substitute decision maker is responsible for purchasing any ambulatory aids required. We will make arrangements for suppliers to visit the home for your convenience.

Notes...



160 Wellesley Street East
Toronto
Ontario M4Y 1J2

Visit www.wellesleycentralplace.com

Charitable # 888813474 RR0001

Would you like to take a tour of our home?
To arrange ☎ 416 929 9385

WHAT WE PROVIDE

From the moment you arrive we will do our best to make you feel right at home.

We know that it takes time to adjust to 'moving in' to a new home and we want you to feel comfortable as soon as possible.

Please bring some of your special treasures from home with you. You are encouraged to decorate your room with memorabilia and some furniture items. We will provide room furniture if you don't bring any from home.

The Wellesley Central Place

Welcome to Wellesley Central Place. This modern and environmentally responsible Nursing home builds on the years of experience and tradition developed at its sister home down the road, the Re kai Centre.

From the moment you enter the main door on Wellesley Street, you will sense the warmth and tranquility. This urban oasis in the heart of downtown Toronto has been designed to provide the

ultimate in care in the intimacy of a small town environment.

The ground floor is a great space:

- Visit with your family and friends in the Activity Room with its Aviary and cozy fireplace, or treat them to a coffee in the café.
- Perhaps you prefer a stroll in the gardens, there are two enclosed courtyards designed specifically to provide access to the outdoors.
- When the weather outside is not inviting, choose our 'Winter Garden' as your resting spot.
- There is, a barber shop/ hairdressing salon, and even a family suite where out-of-town guests can be accommodated should the need arise.
- A multi-faith place of worship is also located on the main floor.

Resident home areas are located upstairs.

Each Home Area accommodates 25 residents and has its own beautifully appointed

dining room with fire place, activity room, and lounge area.

It's hard to believe you are in a Nursing Home. The resident rooms are large so you will have lots of space to personalize your own room. Each resident will have his own private room and couples may be accommodated in 2 rooms with an adjoining bathroom. We do your laundry but there are free Laundromats in each Home Area.

Resident Accommodation

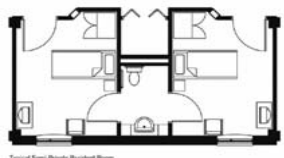
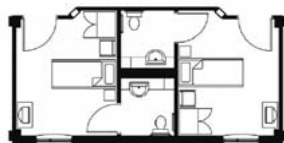
Rooms

- 150 beds, 25 per Home Area
- All rooms are private, 60 share washroom facilities
- Larger than the new standard Ministry of Health guideline requirements

Features

- Private rooms
- Mix of private (90) and basic (60)
- Every resident has a window – facing the street, back garden or the courtyard
- Entrances recessed to create a sense of entry

- Each room has a memory box at the front door to differentiate the Resident's space
- Mobile furniture to provide for maximum flexibility of furniture arrangement
- Washrooms are well appointed and wheel chair accessible
- Rooms flooded with natural light
- Washrooms akin to residential ensembles as opposed to institutional hospital facilities



Accommodation Fees:

Accommodation fees are set yearly by the Ministry of Health and Long-term Care. For up to-date fees please go to the website www.health.gov.on.ca or contact their information line: ☎ 1-866-532-3161

Included in cost

- 24 hour Registered Nurse and Personal Support Worker access
- Dedicated Physician on call 24/7 with regular weekly in home visits

- administration of medication and assistance with activities of daily living
- medical supplies and nursing equipment necessary for care e.g. pressure relieving equipment, continence products, infection control and sterile procedures
- Bedding and linens
- Bedroom furnishings such as beds with adjustable head and foot., mattresses adjustable side rails, bedside tables, easy chairs, and clothes closet
- laundry services including labeling and machine washing/drying of personal clothing
- all meals (including therapeutic diets), snacks and dietary supplements
- room cleaning and upkeep
- supplies and equipment for personal hygiene and grooming
- social, recreational and physical activities

HOW TO APPLY

All applications for accommodations must be processed through your local Community Care Access Centre (CCAC).

A visiting CCAC worker will visit you at home or in hospital and assist you to complete the application.

You will be asked to make choices about which facility you prefer, then the application will be forwarded to that home and your name will be placed on their waiting list.

When a bed becomes available, applicants are notified by the CCAC in order of the date of application and you will have 24 hours to respond.

The **CCAC** establishes and maintains each Long-Term Care facility's wait list.

We encourage you to contact CCAC at 416-217-3820 if you have any questions or concerns.